

CLEAN SCREEN[®] RSV Reduced Solvent Volume Extraction Columns



Reduced Solvent Volume extraction columns are micro bed packed columns which offer the advantages of disc technology yet maintain the proven track record of our conventional SPE columns. Reduced Solvent Volume columns use 75% less solvent than traditional packed columns. Less solvent means faster extractions, higher throughput and less waste disposal, which translates into significant savings in both time and money. Results demonstrate that therapeutic and abused drugs in urine and blood matrices can be extracted with cleanliness, high recoveries and consistent reproducibility by using the Reduced Solvent Volume extraction column.

RSV columns are available in 1 mL, 3 mL and 10 mL configurations. These columns can be used with vacuum manifolds or positive pressure, as well as conventional automated extraction equipment.

Advantages of CLEAN SCREEN[®] RSV:

75% Reduction in total liquid volumes

- Lower cost per extraction
- Faster extraction times
- Less disposal cost
- Increased automated throughput

50% Reduction in eluate volume

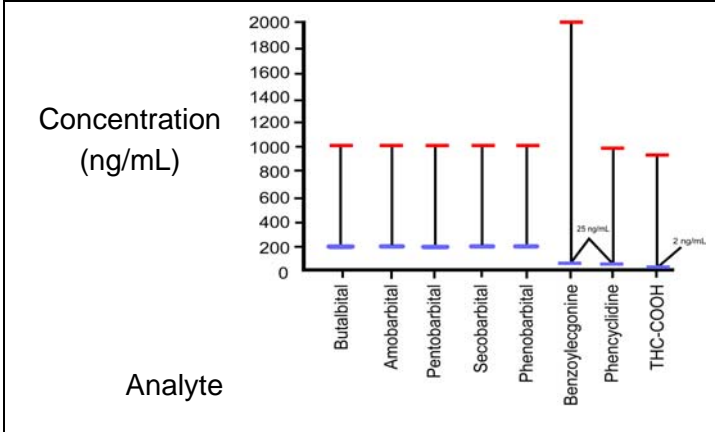
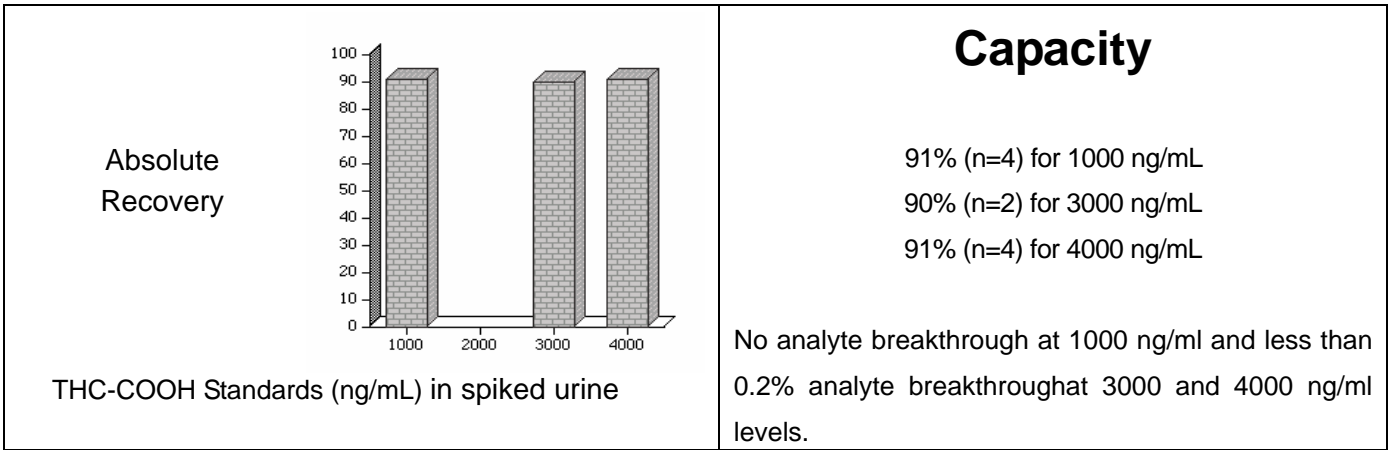
- Faster dry down times
- Reduced exposure to organic solvents

Superior flow characteristics

- Less flow restriction from matrix proteins or particulates
- More reliable for automated processing

High capacity

- Greater linear range



Recovery

Linear Ranges Exhibiting Greater than 85% Recoveries in Urine.

Legend:
 Red bar: Highest Concentration test
 Blue bar: Lowest Concentration test

Analyte	Solvent Usage Reduced Solvent Volume SPE columns	Solvent Usage Traditional Packed columns	% Solvent Reduction
Barbiturates	4.25 mL	18 mL	76%
Benzoyllecgonine	4.65 mL	19 mL	76%
THC-COOH	4.85 mL	16.4 mL	73%
Phencyclidine	5.15 mL	18 mL	70%

CLEAN SCREEN[®] RSV Reduced Solvent Volume Extraction Columns

Part Number without Clean-Thru [®] Tips	Part Number with Clean-Thru [®] Tips	Sorbent Amount/ Tube Volume	Unit per Pack	Description
Copolymeric Extraction for All Drug Classes				
CSDAUA51 CSDAUA83 ZSDAUA08Z	CCDAUA51 CCDAUA83 ZCDAUA08Z	50mg/1mL 80mg/3mL 80mg/10mL	100 50 50	CLEAN SCREEN[®] DAU Column is copolymerized on a rigid, purified silica gel support. The two functional groups include a reverse phase, and an ion exchanger, benzenesulfonic acid. This column is commonly used for analyzing a wide range of drugs of abuse, including acidic, basic and neutral drugs.
Specifically for THC & THCA Extraction				
CSTHCA51 CSTHCA83 ZSTHCA08Z	CCTHCA51 CCTHCA83 ZCTHCA08Z	50mg/1mL 80mg/3mL 80mg/10mL	100 50 50	CLEAN SCREEN[®] THC Column is copolymerized on a rigid, purified silica gel support. The two functional groups include a reverse phase, and an ion exchanger, quaternary amine. This column is commonly used for analyzing THC and its metabolites.
C18, Octadecyl Tri-Functional				
CEC18A051 CEC18A083 CEC18A08Z	CUC18A051 CUC18A083 CUC18A08Z	50mg/1mL 80mg/3mL 80mg/10mL	100 50 50	% Organic Loading: 21.70 Application: Removes hydrophobic impurities, de-salting and purification of hydrophobic compounds.